



# Research Zoom Stereo Microscope

## RSM-9 Series

(Code- RSM-75)

### General Technical Data

Optical system	Greenough System
Illumination	Top/ Bottom (LED/Halogen), Coaxial*, Cold Light*, Diascopic*
Viewing Head	45°, 50-75mm Interpupillary Adjustable
Eyepiece	WF10X (F.N. 22) with Dioptic Adjustment 15X (F.N. 15)*, 20X(F.N. 10)*, 30X(F.N. 8)*
Stage	Large Stage With Handrest
Objectives	Long Working Distance 1X, 0.5X*, 1.5X*, 2X*
Zoom Ratio	7.5 : 1 (0.67-5.0)
Highest Magnification	300X*
Stand	With Two Step Focussing, Universal*, Customized*
Camera Port	Single*, Dual Port *, Intermediate Parallel Zoom*
Other Contrast	Dark-field*, Polarizing*
Motorized Control	Motorized Focus*, Zoom*
Certification	CE, UL, ISI, ISO

\* Optional

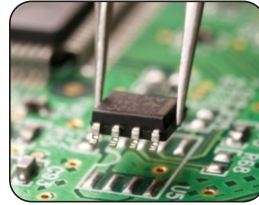


### Key Features

- Greenough Objectives
- Upto 7.5:1 ratio
- FOV 22mm
- Resolution 432 LP/mm

## Areas of research applications

- Dissection
- Crystallography
- Embryology
- IVF
- Electronics



The special characteristics of Zoom Microscope is that one can observe the object in three dimensions within the field of view. It is ideally suited for Industrial as well as for Biological Research where high precision, maximum working distance and large field coverage is required. The flat field parfocal zoom objectives provide continuously variable magnification form 3.35X to 300X depending upon the eyepieces and auxiliary lenses used.

The Model RSM-9 Series offer superior quality optics and reliable mechanical components. This exceptional optical quality allows users to perform tasks efficiently and maintaining high productivity. A wide variety of stands and illuminators are available to suit many different applications.

These microscopes feature a standard zoom magnification from 6.7X to 50X, zoom ratio 7.5:1 with standard Eyepieces WF10X/22. The images are sharp, clear, flat and having good resolution contrast even at periphery of field. Binocular Body inclined at 45°, for fatigue free viewing, can be rotated a full 360° and locked in any position. Ergonomically positioned bilateral ocular tubes are interlocked for improved Operatability. Inter Pupillary Distance 50-75mm.



RSM-9 Series			
Description	Item Code	RSM-75-B	RSM-75-T
Optical System		Greenough Optical System	
Total Magnifications		3.35X- 300X (Depending on Eyepiece & Objective Used)	
Standard Zoom (1X OBJ.)	<b>RSM-75</b>	6.7X-50X, WD 90mm	
Auxiliary Objectives	<b>RS0705</b>	0.5X WD 130mm	
	<b>RS0702</b>	2X WD 20mm	
Eyepieces with Diopter Adjustment	<b>RS0710</b>	WF 10X (F.N. 22)	
	<b>RS0715</b>	WF 15X (F.N. 15)	
	<b>RS0720</b>	WF 20X (F.N. 10)	
	<b>RS0730</b>	WF 30X (F.N. 8)	
Eyepiece Inclination	<b>RS07EL</b>	45°	
Interpupillary Distance		50-75mm	
Illumination System	<b>RS7 LED</b>	Epi-illumination, Incident/ Transmitted LED, Intensity Brightness Control	
	<b>RS7 HL</b>	Halogen Lamp 6V 15V adjustment brightness bottom fluorescent lamp 5W	
	<b>RS7 FS</b>	Fibre Optic Light Source with Single or Double Flexible Light Pipes	
	<b>RS7 CL</b>	Co-axial illuminator 12V-100W Halogen	
	<b>RS7 FL</b>	Circular Fluorescent Illuminator	
Stands	<b>RS7 ST</b>	Plain Focusing Stand	
	<b>RS7 CX</b>	Co-axial Coarse and Fine Focusing Stand	
	<b>RS7 GM</b>	Gemological Stand	
	<b>RS7 RU</b>	Universal Stand	
Camera Tube	<b>RS7 CT</b>	XXXXX	Built-in with 0.5X C-mount

Auxiliary Objective	WD (mm)	Eyepiece			
		10X (22mm)	15X (15mm)	20X (10mm)	30X (8mm)
		Magnification	Magnification	Magnification	Magnification
1X	90	6.7-50X	10.05-75X	13.4-100X	20.10-150X
0.5X	130	3.35-25X	5.02-37.5X	6.7-50X	10.05-75X
2X	20	13.4-100X	20.10-150X	26.8-200X	40.20-300X



**Radical Scientific Equipments Pvt. Ltd.**

9th Milestone, Ambala-Jagadhri Road,  
Khudda Kalan, Ambala Cantt- 133104 (INDIA)

Ph.: +91-171-6600500, 2891500

email : info@radicalscientific.com

www.radicalscientific.com | www.rsepl.com